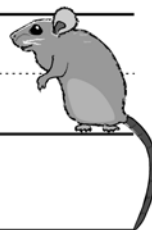




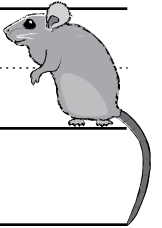
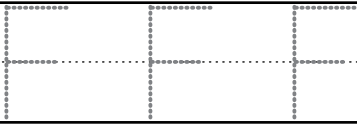
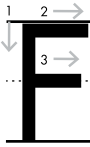
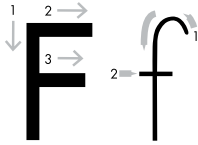
D d

D D D D

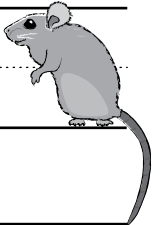
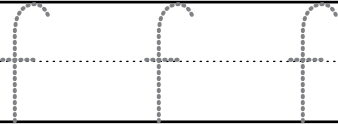
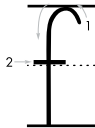


d d d d

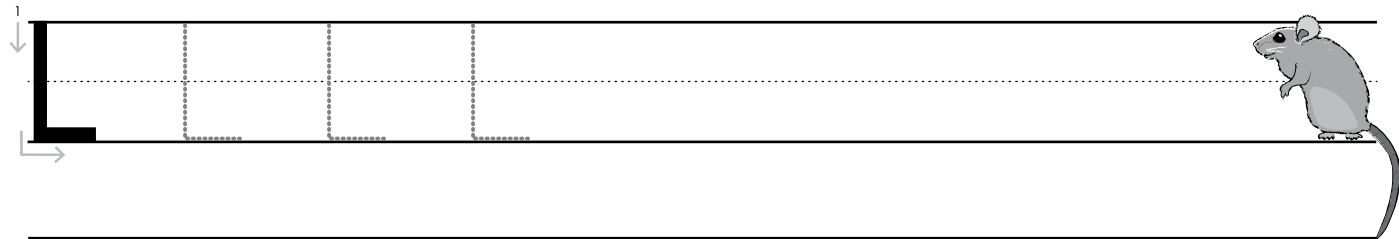
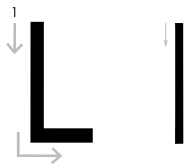




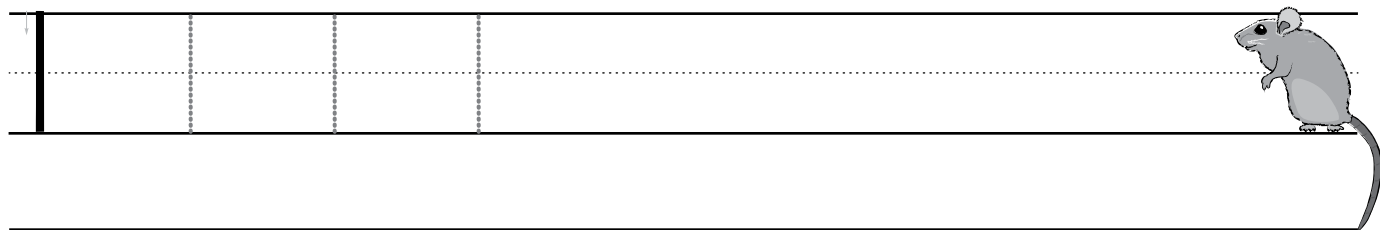
Handwriting practice lines for uppercase F. The first row contains a solid F, a dotted F, and two empty dotted F shapes for tracing. Below are four more rows of empty handwriting lines (top solid, middle dotted, bottom solid) for independent practice.



Handwriting practice lines for lowercase f. The first row contains a solid f, a dotted f, and three empty dotted f shapes for tracing. Below are four more rows of empty handwriting lines (top solid, middle dotted, bottom solid) for independent practice.



Four sets of empty handwriting practice lines, each consisting of a solid top line, a dashed middle line, and a solid bottom line.



Four sets of empty handwriting practice lines, each consisting of a solid top line, a dashed middle line, and a solid bottom line.